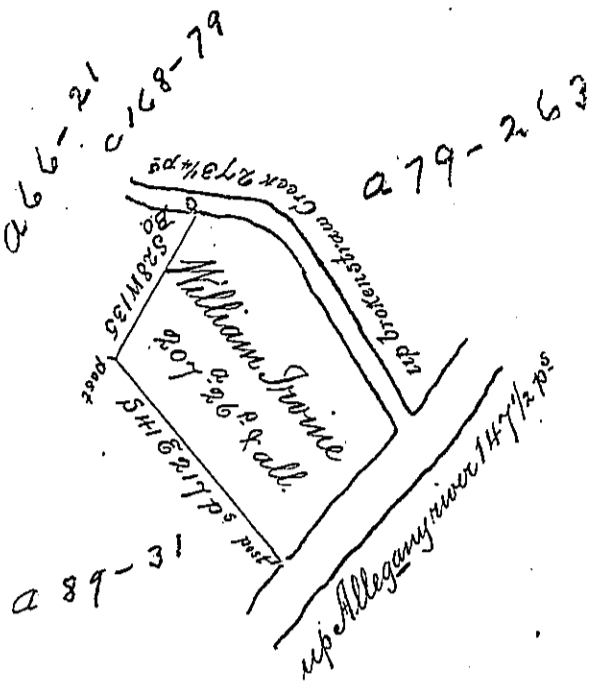


Courses and Distances on
the river and Creek Begin^g
at the Post on the river &
thence up Do

N 25 E 39
N 41 E 58
N 59 E 18 1/2
N 45 E 32 to the Mouth of the Creek
147 1/2 p

thence up Do

N 36 1/2 W 12 1/2
N 25 W 68
N 46 W 31 3/4
S 71 W 46
273 1/4 p. to the B.O.



Surveyed on the 23^d Day of June 1795 the above descri-
bed Tract of Land in District No. 6. in pursuance of a
Warrant granted to William Irvine dated the 25th Day
of April 1792 Containing two hundred and Seven
acres 26 Perches and the allowance of six p Cent &c

Samuel Nicholson

To Daniel Brodhead Esquire }
Surveyor General of Pennsylvania }

Df

IN TESTIMONY that the above is a copy of the original remaining on file in
the Department of Internal Affairs of Pennsylvania, made
conformably to an Act of Assembly approved the 16th day of
February, 1833, I have hereunto set my Hand and caused
the Seal of said Department to be affixed at Harrisburg,
this Seventh day of October 1902

James W. Latta
Secretary of Internal Affairs.